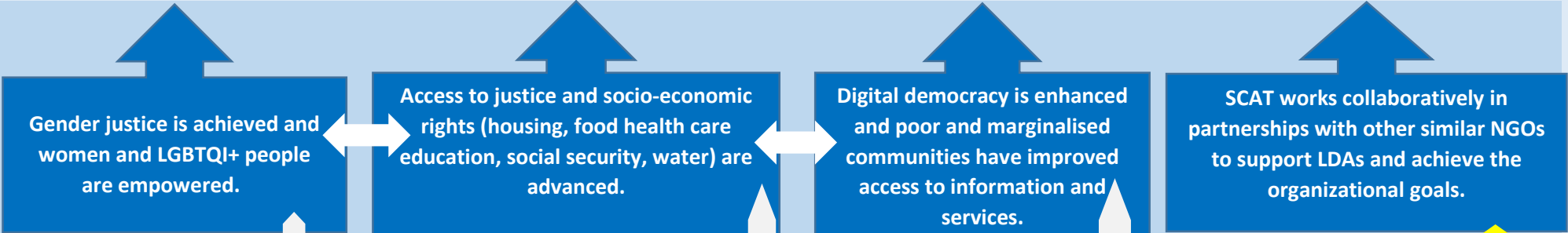




Theory of Change

Strategic Objective: To partner with LDAs to build strong institutions which are able to respond to the cross cutting issues of access to justice, gender, youth and food security.

RESULT AREAS



COLLABORATION ENHANCED

Key partners: Black Sash, AULAI Trust & CCJD, SAFCEI & Heinrich Boell Foundation, Dalberg Consultants and others

CAPACITIES STRENGTHENED

Target group: LDAs in four provinces (Eastern, Western and Northern Cape & Limpopo).

- Knowledge, skills and understanding
- Community mobilisation
- Women and LGBTQI+ leaders
- Paralegals
- LDA governance
- Information, communication, technology
- Sector collaboration

INTERVENTIONS

